

WWW.DANDSGROUP.AU



CAPABILITY STATEMENT

2025



Company Overview

D&S Group is an Indigenous-owned and operated provider of mining, mechanical, maintenance and civil services across Western Australia and beyond. Owner and Managing Director Daniel Reardon has been a mechanical specialist working in the Pilbara for over 20 years and is from Jaru Whadjuk Country. Backed by a management team with decades of industry experience, we deliver reliable, scalable solutions to mining and infrastructure clients. Our leadership combines deep regional expertise with a reputation for performance and trust.

As a Supply Nation certified enterprise, we are committed to cultural integrity, technical excellence and industry innovation. We draw on our proven track record in the Pilbara and beyond to deliver outcomes that meet the needs of today's projects and tomorrow's opportunities.



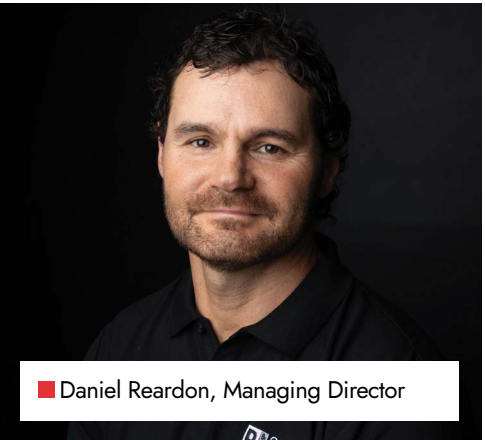
Acknowledgment of Country

We acknowledge the Traditional Custodians of the land on which we operate and pay our respects to their Elders past, present and emerging. We recognise their continuing connection to land, waters and culture and extend that respect to all Aboriginal and Torres Strait Islander peoples today.

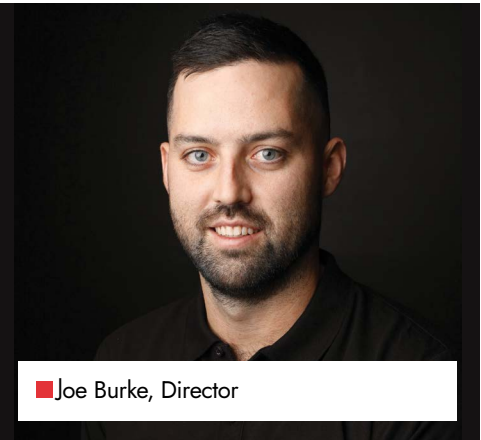
Our Purpose

D&S Group exists to deliver specialist mechanical and civil services that empower Australia's mining, infrastructure and regional development sectors. We aim to drive performance while creating meaningful opportunities for Indigenous people through employment, leadership and enterprise. Every project we deliver is grounded in safety, accountability and care for Country.

From shutdowns to start-ups, our skilled crews keep machinery moving and projects progressing across Western Australia.



■ Daniel Reardon, Managing Director



■ Joe Burke, Director



■ David Luxton, Director

Proudly Indigenous. Proven in the Pilbara. D&S Group operates across the mining, maintenance and civil sectors with precision, adaptability and a track record of performance in WA's toughest environments.



Company Details

www.dandsgroup.au

1/52 Frobisher Street, Osborne Park, WA 6017

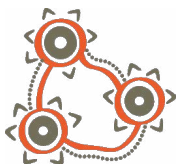
admin@dandsgroup.au ABN 78 657 769 698

Daniel Reardon
0447 735 633

Joe Burke
0408 609 148

Dave Luxton
0417 183 620

Admin & Accounts
0409 570 981



ABORIGINALBUSINESS
DIRECTORY WA



» Integrity & Accountability

We act with honesty, uphold our commitments and accept responsibility for every project outcome — earning trust through transparency and consistency.

» Innovation

We solve complex challenges with practical thinking and customised tools, creating smarter, safer ways to deliver value to our clients and communities.

» Care for Country

We embed cultural responsibility in our work, protecting land and heritage while supporting Indigenous advancement in everything we do.

Our Services

D&S Group delivers a full suite of mechanical; maintenance and civil services tailored to the needs of mining and infrastructure clients. Our crews are ready, responsive and supported by custom tooling and modern equipment to ensure efficient delivery and maximum asset uptime.

Your mechanical advantage on every project.
From tooling to talent, we deliver results that keep the Pilbara productive.



» Shutdown Execution & Labour Hire

We deliver planned shutdown support with reliable backfill labour and maintenance crews. Our workforce is stable, site-ready and known for hitting shutdown schedules without compromise.

» New Fleet Commissioning

We dismantle, transport and reassemble mining fleets, including bucket builds and commissioning for Original Equipment Manufacturer (OEM) and contractor fleets across multiple sites.

» Civil Works & Drainage

Our experience extends to culvert installation, drainage, batter trimming and detailed earthworks, rock protection, installation of underground services, maintenance and rehabilitation. We provide full service civil construction solutions through a highly skilled team of engineers, statutory supervisors, drainers and plant operators and reliable equipment.

» Field Service & Mobile Support

We provide fully equipped mobile service units, experienced HD fitters and auto electricians to perform in-field repairs, maintenance and diagnostics in remote and metro areas.

» Preventative & Planned Maintenance

Our teams specialise in diagnostic testing, hydraulic tuning and scheduled servicing for autonomous fleets and mobile plant across the Pilbara and beyond.

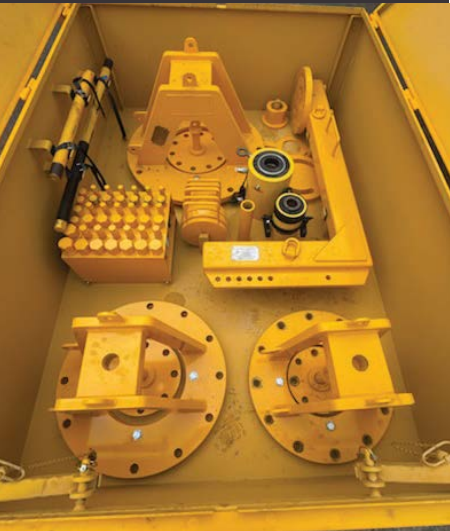
» Equipment Hire & Specialised Tooling

We offer plant and equipment hire, including mobile workshops and custom tooling like our exclusive Tumbler Press Kit for Hitachi undercarriage maintenance.

Our Fleet

We maintain a modern, mine-spec fleet designed to meet the demands of heavy industry and remote work. All assets are compliant with site safety requirements and regularly serviced for optimal performance.

Our Engineer designed Tumbler Press Kit enables the safe removal and installation of Hitachi excavator tumbler internal components – without risk of damage. This system delivers precise, controlled force and dramatically reduces maintenance time in shutdown environments.



» Maintenance Equipment

- Hilux Dual Cab Utes with tooling
- Landcruiser service vehicles
- 20ft air-conditioned Site Office
- Mobile Workshop with Dome (Hydrocarbon container with A-Flo equipment)
- Tumbler Press Kit with custom trailer
- LV & HD Tyre Change units
- Boilermaker trailer with welder and generator

» Specialised Tooling

D&S Group value the safety of our staff and clients, we believe having the right tooling for the task is essential to the job's success from a safety and downtime aspect. D&S Group have a specialised tooling division that can supply tooling for various complex tasks. From a Tumbler Press to suit EX2600, EX3600, EX5600 Hitachi Excavators. To pressing and pulling and aircon tooling.

» Support & Specialised Units

- Dual Cab Hilux Utes (mine spec, culvert tooling)
- MAN Crew Cab Wagons (4x4)
- 6m Sea Containers with rigging and tooling
- Fuel Trailers
- Trailer-mounted Polywinder
- Solar-powered portable site facilities equipment/tooling (available on request to support sustainable operations)

» Civil Plant & Machinery

- Sumitomo Excavators: 35T, 37T, 49T – select units with GPS capability
- Kawasaki Loaders: 250ZW-5B, 85ZV-2
- Western Star & MAN Prime Movers
- Water Carts (6-wheel and 8-wheel)
- Side Tipper Trailers
- Drop Deck Floats and Dolly's
- Rockbreakers, Plate Compactors
- Fire Suppression (select units)

Safety, Community & Sustainability

» Safety First

Our team operates with an uncompromising commitment to safety. We implement ISO-aligned systems for Health, Safety, Quality and Environmental Management, with site-specific controls and proactive training to ensure that every person gets home safe – every shift, every site.

» Sustainable Practices

We reduce our environmental impact through fleet modernisation, waste minimisation and green infrastructure initiatives. We store assets locally, use Euro 5/Tier 5 machines and explore renewable energy across mobile and fixed assets. To reduce landfill waste and promote safer work practices, we developed an in-house poly-winder to reuse poly pipe and reduce manual handling and injuries. We are committed to ensuring that all environmental impacts that result from our activities and services are managed, identified and controlled.

» Community Driven

Led by Daniel Reardon, a Jaru Whadjuk man, and one of the inaugural Indigenous graduates of the Clontarf Academy, we embed Indigenous values into our operations. We are a proud Partner of the Clontarf Foundation, prioritise Aboriginal employment and aim for 25% Indigenous participation and increased Youth employment. All staff complete Indigenous Cultural Competency Training as part of our commitment to respectful and inclusive workplaces. We actively support Pilbara Indigenous suppliers and talent to contribute to the local Pilbara economy and employment.

We take pride in our strong community connections as proud members of the Karratha & Districts Chamber of Commerce and Industry (KDCCI), Pilbara Indigenous Network Group, WA Mining Club and Waalitj Hub, fostering collaboration and shared success.



Industries We Serve

- » Mining
- » Civil Construction
- » Government & Public Infrastructure
- » Energy

Case Study

⚡ The Challenge

Fortescue required a dependable partner to deliver a high-volume 793F truck shutdown program across a live production environment. The challenge was to deliver with zero disruption to uptime while meeting tight shutdown schedules and operational safety benchmarks. Performance, availability and reliability were non-negotiable, and every hour of planned work had to align with Fortescue's strategic maintenance windows.

🎯 Our Solution

D&S Group deployed a dedicated crew comprising four team leaders, six heavy diesel fitters and three auto electricians on rotating 12-hour shifts. Our approach combined operational discipline with responsive supervision and detailed reporting. We ensured tooling, parts and labour were fully aligned to site schedules, coordinating our field teams to meet Fortescue's stringent timeframes and zero-harm targets.



🏆 The Result

As a direct result of our performance, the contract was extended from 12 to 18 months. Asset availability improved significantly, contributing to Fortescue's production continuity and reduced unplanned downtime. Our direct delivery model, backed by experienced leadership and consistent crew deployment, established D&S Group as a preferred partner for critical fleet shutdowns.


Our crews don't miss. Trusted by tier-1 companies, extended by performance and proven where production can't afford to pause.

| Client | Project Type | Project Overview | Scope | Duration |
|---|---|--|---|----------------------|
| Fortescue Solomon -Truck Shut | 793F Major Shuts | Supply HD Mechanical & Auto Elecs to Complete Shut program as per shut schedule | Major component change outs, rehousing, engine midlife's & change outs | Sept 2024 - Current |
| Thiess - Iron Bridge Shuts/ Workshop & Specialised Maintenance Services | LTP shuts, planned servicing and breakdown repairs, loader inspections and improvements | Supply HD Mechanical and auto electrical, servicemen and trade assistant labour as well as field workshop hire | Carry out maintenance on Thiess mining equipment, complete shut schedules as per planned maintenance | Nov 2022 - Current |
| Plummers Industries and PPS Water Group - Newman Yard, BHP Julgari, Cloudbreak, Newman Yard | Civil and Drainage Works | Supply HD Mechanical Labour | Carry out scheduled maintenance and breakdown repairs on civil equipment such as 30-50 tonnes excavators, loaders, water carts, prime movers, floats, polywelders, gensets, etc | Aug 2023 – June 2024 |
| Austral Construction - Mooka | Civil Works | Supply HD Mechanical Labour | Maintenance on Komatsu Excavators | Sept 2023 – Nov 2024 |
| Corps Earthmoving - Karratha Workshop | Road Transport | Supply Heavy Road Transport (HRT) Mechanical Labour | Carry out scheduled maintenance and repairs on a variety of road transport trucks and trailers | Sept 2023 – Nov 2024 |
| PARC Engineering - Christmas Creek | Civil Works | Supply HD Mechanical Labour | Carry out maintenance on civil equipment from excavators, loaders, water carts, polywelders, cranes, trailers, light vehicles, etc | Apr 2023 – Jul 2024 |
| D&S Civil - Fleet servicing and field maintenance | Civil and Drainage Works | Supply HD Mechanical Labour | Carry out scheduled maintenance on civil and drainage machines | 2022 – Current |



ABN 78 657 769 698

 **Daniel Reardon**
0447 735 633

 **Joe Burke**
0408 609 148

 admin@dandsgroup.au

 www.dandsgroup.au

 **Dave Luxton**
0417 183 620

 **Admin & Accounts**
0409 570 981